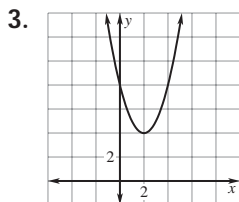
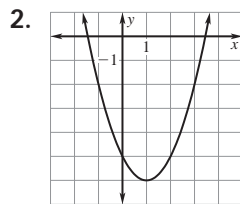
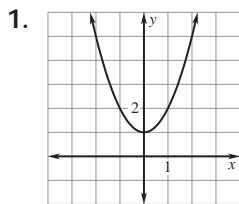


Answer Key

Test C



4. $\frac{5}{2}, -\frac{5}{2}$ 5. $\frac{2}{3}$ 6. $-2, 3$

7. $2\sqrt{5}, -2\sqrt{5}$ 8. $-1 + \sqrt{6}, -1 - \sqrt{6}$

9. $1 + i\sqrt{19}, 1 - i\sqrt{19}$ 10. $3 + 3i$ 11. -1

12. $\frac{3 + 4i}{5}$ 13. $2i\sqrt{2}, -2i\sqrt{2}$

14. $8\sqrt{2}, -8\sqrt{2}$ 15. $\sqrt{65}$ 16. $\sqrt{10}$

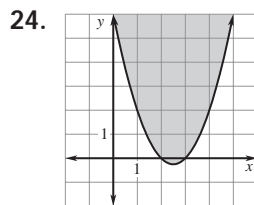
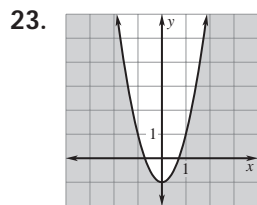
17. $1 + 3i, 1 - 3i$

18. $\frac{-9 + \sqrt{105}}{4}, \frac{-9 - \sqrt{105}}{4}$

19. $\frac{3 + i\sqrt{11}}{2}, \frac{3 - i\sqrt{11}}{2}$ 20. $2 + 2i, 2 - 2i$

21. 121; 2 real solutions

22. -23 ; 2 imaginary solutions



25. 1.84 seconds