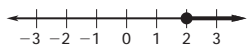


Answer Key

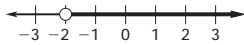
Cumulative Review

1. -14 2. -5 3. 14 4. -26 5. -27
 6. -14 7. 6 8. $-\frac{19}{2}$ 9. $\frac{23}{11}$ 10. 6 11. 8
 12. 10

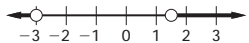
13. $x \geq 2$



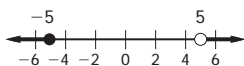
14. $x > -2$



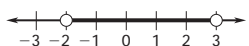
15. $x > \frac{3}{2}$ or $x < -3$



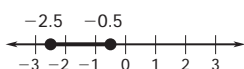
16. $x > 5$ or $x \leq -5$



17. $-2 < x < 3$

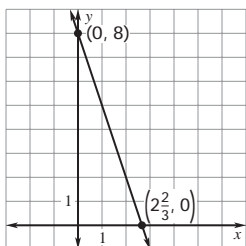


18. $-2.5 \leq x \leq -0.5$

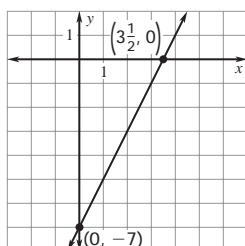


19. Line 2 20. Line 2 21. Line 1 22. Line 2

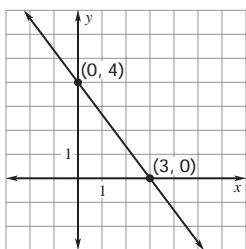
23.



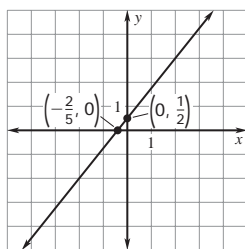
24.



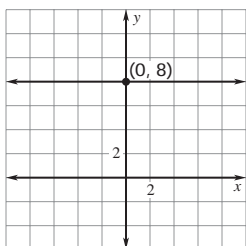
25.



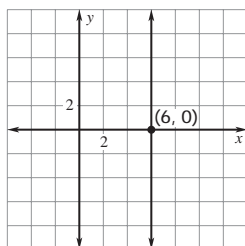
26.



27.



28.



29. $y = 3x + 5$ 30. $y = \frac{2}{5}x - \frac{24}{5}$

31. $y = -\frac{3}{4}x + 5$ 32. $x = 2$

33. $y = -\frac{3}{2}x + 2$ 34. $y = -\frac{2}{3}x + \frac{7}{3}$ 35. 2

36. 6 37. -3 38. 0

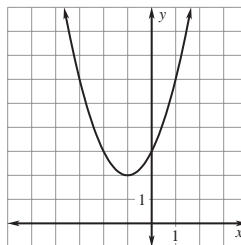
39. infinitely many solutions 40. none

41. one 42. (3, -2) 43. $(\frac{1}{2}, 4)$ 44. (1, 0)

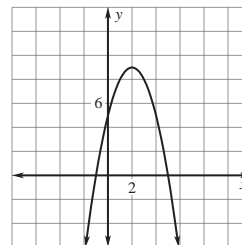
45. $(\frac{1}{3}, 4)$ 46. (-2, 5) 47. (0.5, 0.3) 48. -8

49. -6 50. 7 51. -65 52. -14 53. 1

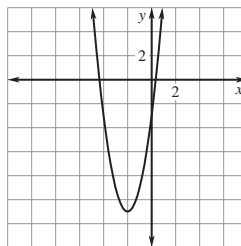
54.



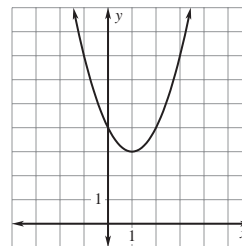
55.



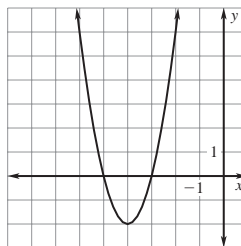
56.



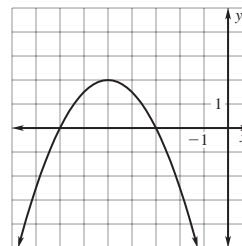
57.



58.



59.



Answer Key

60. $\pm\sqrt{3}$ 61. $3 \pm \sqrt{6}$ 62. ± 4 63. $-\frac{3}{2}$
64. ± 3 65. $-\frac{2}{3}, 5$ 66. 5 67. $2\sqrt{5}$ 68. $\sqrt{2}$
69. $\sqrt{26}$ 70. $\sqrt{10}$ 71. $\sqrt{11}$
72. $\frac{-1 \pm \sqrt{41}}{4}$ 73. $\frac{9 \pm \sqrt{41}}{20}$ 74. $4 \pm \sqrt{7}$
75. $\frac{4}{3}, -1$ 76. $\pm 3\sqrt{2}$ 77. $-2 \pm \sqrt{3}$
78. $(3x^2 + 1)(3x^2 - 1)$ 79. $(x^2 + 2)(x^2 + 1)$
80. $3x(2x^2 + 1)(x^2 + 2)$
81. $3x(x - 3)(x^2 + 3x + 9)$
82. $(4x^2 + 1)(x^2 + 9)$ 83. $(3x^2 + 1)(2x + 3)$
84. $2x^2 + 4x + 5 + \frac{15}{x - 2}$
85. $x - 1 + \frac{-4}{x - 1}$ 86. $3x + 8 + \frac{38}{x - 4}$
87. $x^3 + x^2 + 3x + 10 + \frac{5}{x - 3}$
88. 8 in. on each side