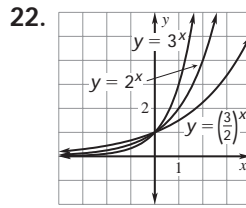
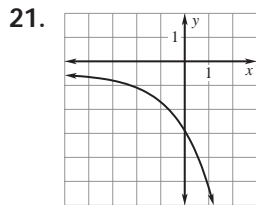
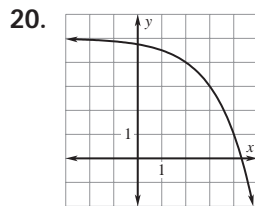
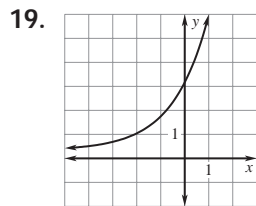
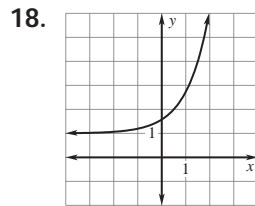
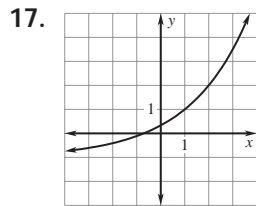
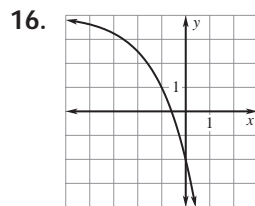
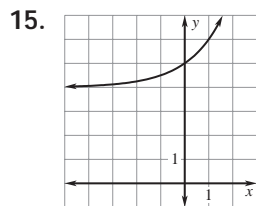
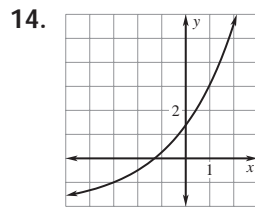
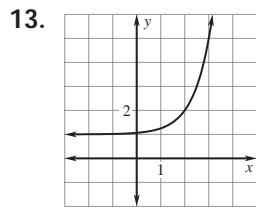


Answer Key

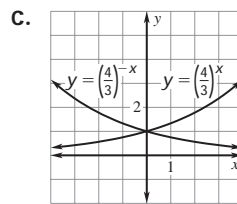
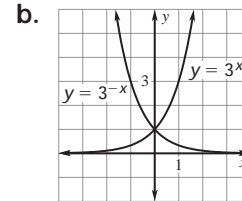
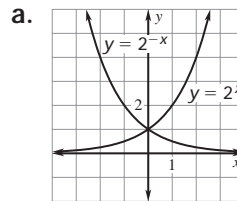
Practice C

1. $-1; y = -2$
2. $\frac{1}{5}; x\text{-axis}$
3. $7; y = 4$
4. $\frac{1}{75}; x\text{-axis}$
5. $6; y = 7$
6. $-3.2 \times 10^{-5}; x\text{-axis}$
7. domain: all real numbers; range: $y > 3$
8. domain: all real numbers; range: $y > -2$
9. domain: all real numbers; range: $y > 4$
10. domain: all real numbers; range: $y > -2$
11. domain: all real numbers; range: $y > 4$
12. domain: all real numbers; range: $y < -3$



All three graphs have a y-intercept of 1. The larger a is, the steeper the graph.

23.



Reflection across the y-axis

24. a. \$1077.80

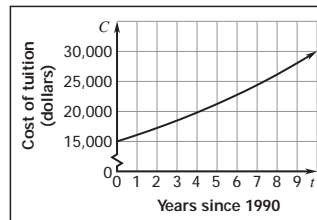
b. \$1077.88

c. \$1077.88

25. yes; \$1077.88

26. $C = 15,000(1.072)^t$

27.



28. 1994

29. \$60,254.15