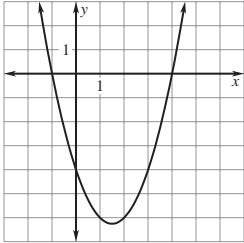


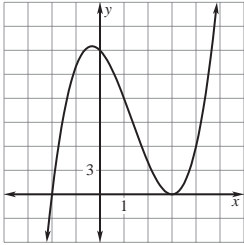
Answer Key

Practice B

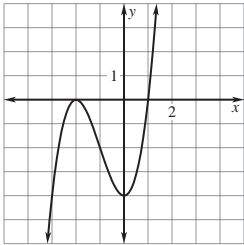
1. 3 2. 2 3. 5 4. 1 5. 6 6. 8 7. B
 8. C 9. A 10. -3, 2, 5 11. -4, 6, 8
 12. -3, 2 13. -5, -1, 7 14. -6, -2 15. 8
 16.



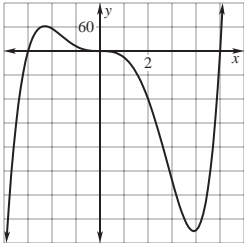
18.



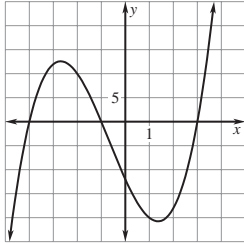
20.



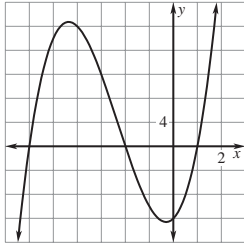
22.



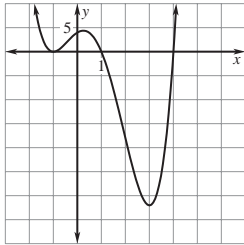
17.



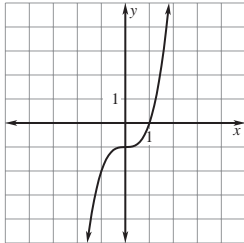
19.



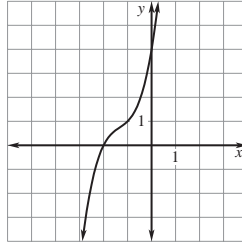
21.



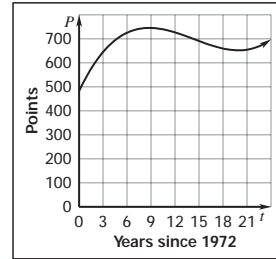
23.



24.



25. (8.78, 745.80) is a local maximum; (19.95, 652.46) is a local minimum; During the 1980 games the gold medal winner scored more points than in previous years and that was the record for several years following 1980. Starting in 1992, the number of points started to increase after several years of declining scores.



26. (8.5, 122,069.35) is a local maximum. (29.3, 96,068.15) is a local minimum. In 1973, the number of cattle on farms reached a maximum of 122,069.35 thousand. This number decreased to 96,068.15 in 1994 and then started to rise again.

