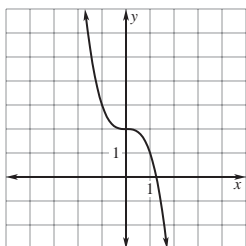


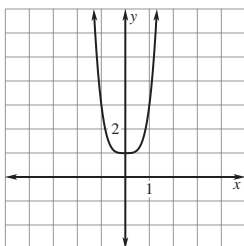
Answer Key

Practice B

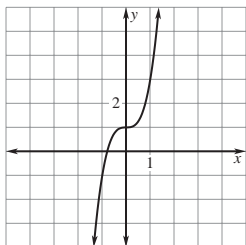
1. yes; $f(x) = -2x^3 + 3x^2 + 4x$; 3; -2 2. no
 3. no 4. yes; $f(x) = 2x^5 + 7x^2 - 3$; 5; 2
 5. yes; $f(x) = -\frac{1}{6}x^2 + \frac{1}{3}x + \frac{2}{3}$; 2; $-\frac{1}{6}$
 6. yes; $f(x) = \sqrt{5}x^4 + 2x^2 - x - 7$; 4; $\sqrt{5}$
 7. -7 8. 3 9. 23 10. -30 11. 8
 12. 52 13. 6 14. -84 15. 98 16. -86
 17. -5 18. 74 19. 37 20. 0 21. -72
 22. -6
 23.



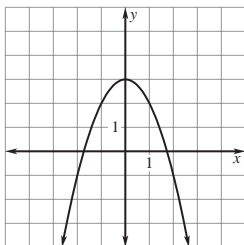
24.



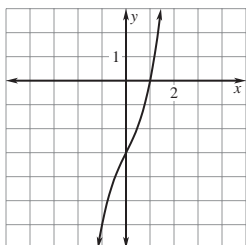
25.



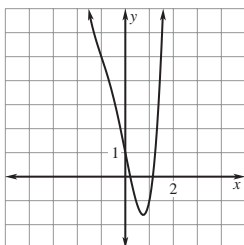
26.



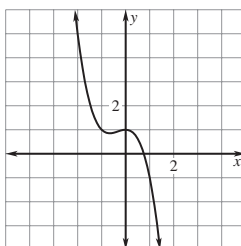
27.



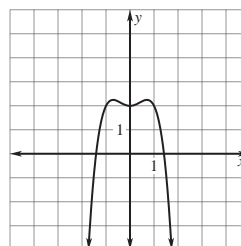
28.



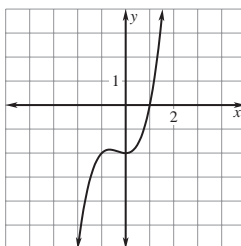
29.



30.



31.



32. \$1.02

33. \$491,662.20