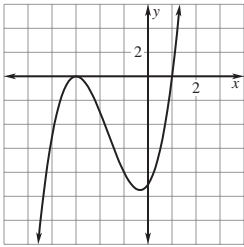


# Answer Key

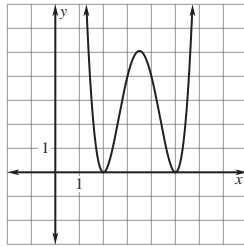
## Practice C

1. 3   2. 2   3. 4

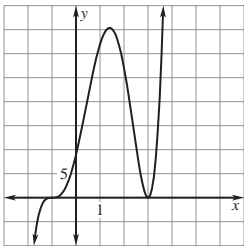
4.



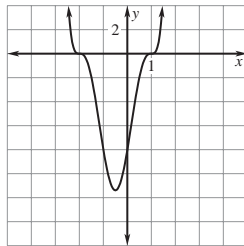
5.



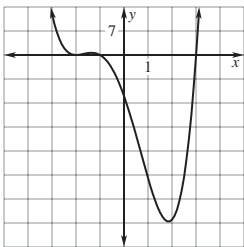
6.



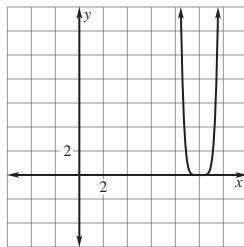
7.



8.

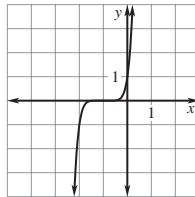
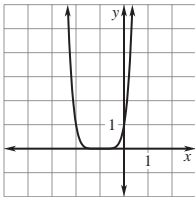


9.



10. -1   11. 2, 4   12. 1, 3, 5

13. If  $n$  is even there is a turning point. If  $n$  is odd the graph passes through the  $x$ -axis.



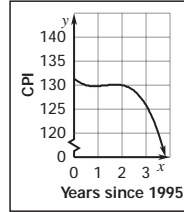
14. -2, 3; 3   15. 1, 7; none   16. -3, 5; -3, 5

17. -4, 3; -4   18. 1, 3; 1   19. -4, 0, 2; -4

20. -3, 2, 5; none   21. -3, 2, 3; -3, 3

22. -8, 1, 4; 1

23.



local minimum  
(0.86, 129.88), local  
maximum (1.72, 130.20);

In 1996 you could buy  
more women's and girls'  
apparel with your money  
than in previous years, but

by 1997 prices were higher than in recent years.