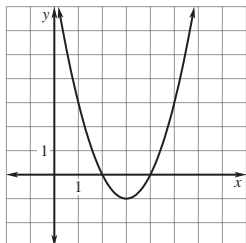


# Answer Key

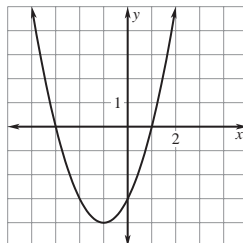
## Practice A

1. 4   2. 5   3. 3   4.  $(-2, 5)$  local maximum;  
 $(\frac{1}{2}, 3)$  local minimum   5.  $(1, 2)$  local minimum  
 6.  $(-1, -4)$  local minimum;  $(\frac{1}{2}, 1)$  local  
 maximum;  $(1, 1)$  local minimum

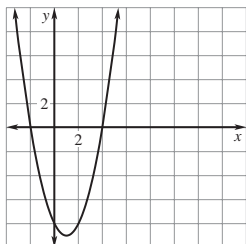
7.



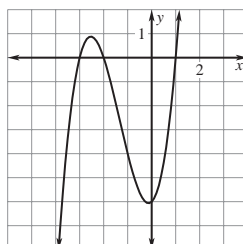
8.



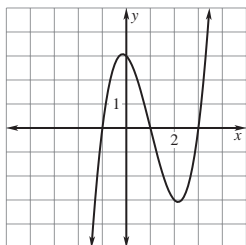
9.



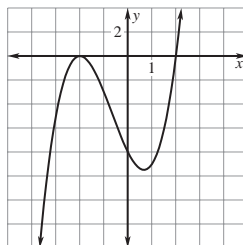
10.



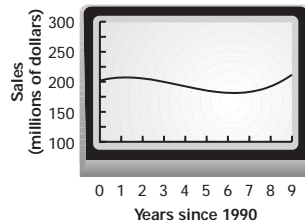
11.



12.



13.



14. 1996   15. \$244 million